

Instruction Manual

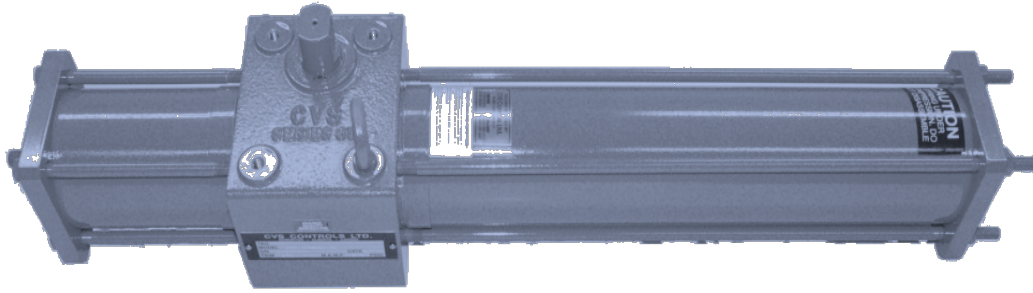


Figure 1: CVS Series 35D SRM100 Actuator

CVS Series 35D SRM100 Scotch Yoke Hydraulic Actuator

Introduction

The CVS Series 35D SRM 100 Hydraulic Actuator uses a scotch yoke mechanism to convert linear piston motion to a 90 degree rotation. The CVS 35D Series actuator incorporates key materials for construction, such as aluminum drive case, fiber wound cylinders, and do not use brass or bronze components to allow for use in sour gas applications.

The CVS 35D Series actuator is well suited for operating plug, ball, butterfly, dampers and other devices requiring 90° turn rotation. ($\pm 4^{\circ}$ of additional angle adjustment)

Head Office

3900 101 Street
Edmonton, Alberta
T6E 0A5
Canada

Office: (780) 437-3055
Fax: (780) 436-5461

CVS
Controls Ltd.

Website: www.cvs-controls.com

Email: info@cvs-controls.com

Calgary Sales Office

205, 2323 – 32 Avenue
Calgary, Alberta
T2E 6Z3
Canada

Office: (403) 250-1416
Fax: (403) 291 9487

Features

- Scotch Yoke Mechanism, high breakaway and reseat torque
- $\pm 4^\circ$ of additional angle adjustment
- Can be used for fail open, or closed
- Light weight Aluminum Drive Case
- Light weight and durable Fiber Wound Cylinders
- Standard operating temperature range: -50°C to $+80^\circ\text{C}$ (-58°F to $+176^\circ\text{F}$)
- Safe reliable spring cartridges to allow removal for field service
- Stainless Steel Stem and Drive Rod components
- Fully Serviceable

Installation

Align actuator and valve in the same position, open or closed. Check mounting surfaces and orientation of the actuator to the valve for any misalignment. Set actuator into position on valve, and install all bolts and nuts. Align actuator and valve stem; tighten mounting bolts evenly to torque specifications (20-30 ft-lb). The CVS 35D series actuator is tested and set to fully open or fully closed positions at point of manufacturing. Refer to the **Adjustments** portion of this manual should there be further adjustments required.

Determine Fail Safe Action

With the actuator horizontal, cylinders extended to the sides, and the stem closest to you (vertical), a spring side housing (long cylinder) to the right will indicate a “fail open”, while a spring side housing to the left will indicate a “fail closed”

Maintenance

O-ring, gasket, and bushing replacement are the only expected servicing that may be required under normal operating conditions. Contact your CVS Controls representative for service and repair kits. Specify model and serial number when ordering.

Disassembly

- Ensure no hydraulic pressure is being applied to the actuator. Disconnect all piping and remove the actuator from the valve.
- Remove jam nut (28), flat washer (27), and o-ring (26) from both end caps (22), remove end stop (25)
- Place actuator with cylinders extended to the side

Spring Side Disassembly

- Carefully release preload of spring side cylinder (20b) by evenly loosening stay rod nuts (24)

Disassembly Continued,

- Completely remove stay rod nuts(24) and lock washers (23)
- Remove end cap (22), which allows for removal of spring cartridge

***Note: Do not disassemble spring cartridge (29 thru 34). This is a self contained unit under compression, and may cause injury if disassembled incorrectly.**

- Remove spring side cylinder (20B)
- Remove stay rods (21)

Piston Side Disassembly

- Remove cylinder bolts (37), and lock washers (23) from piston side
- Take end cap (22) off of piston cylinder
- Carefully slide piston cylinder (20) off of piston
- Remove lock nut (18) to allow for removal of piston (15), piston seal (17), and o-ring (16)
- Remove cylinder plate (12), gasket (19), drive rod guide (13), and drive rod seal (14)

Drive Case Disassembly

- Remove drive rod (4) and roller assembly (5 thru 7). Remove snap rings (7), rollers (6) and drive pin (5) from drive rod (4)
- Remove cover screws (10) and cover (2)
- Remove indicator (11) after marking original position. Drive yoke pin (3c) out of stem. (pin must be driven out of yoke

towards markings stamped on the yoke itself as the yoke pin is tapered and can only be removed one way)

- Remove snap rings (3d), stem will now be ready to slide out of case and yoke will be free to take out of case
- Remove o-rings (9) from stem
- Remove bushings (3d) from drive case

Inspection and Cleaning

Inspect o-rings, bushings and gaskets for damage and replace if necessary. Check cylinder bore for scoring. Inspect metal components for wear, corrosion or damage. All parts excluding gaskets (19), may be cleaned with varsol or equivalent as required.

After cleaning, lubricate yoke slots, drive pin, rollers, bushings and guides with a light coat of grease. Apply lubrication to all o-rings.

Assembly

- Install bushings (8) into drive case (1)
- Install o-rings (14) into cylinder plate (12) prior to installing drive rod guide (13)
- Install one o-ring (9) onto stem (3b) and install into case (1) through yoke (3)
- Install another o-ring (9) on stem (3b), and install snap rings (3d) on stem (3b)

Assembly Continued,

- Align stem (3b) with yoke (3) and ensure yoke pin (3c) will line up correctly as the pin is tapered and will only correctly install in one direction, install yoke pin (3c) by gently tapping into yoke (3) and stem (3b) with a hammer
- Make up drive rod assembly by installing drive pin (5), slide drive rollers (6) onto pin (5) and install two snap rings (7)
- Slide completed drive rod assembly through case (1) and position rollers between yoke arms
- Lubricate yoke, drive rod assembly and stem

Spring side cylinder assembly

- Install cylinder plate (12) over drive rod assembly on both sides of case (1), ensure vent holes are in same position on both sides
- Install piston center o-ring (16) on both sides of drive rod assembly
- Install piston (15), (15b) onto drive rod assembly using piston lock nut (18)
- Insert four stay rods (21) into case and tighten
- Place cylinder gasket (19) on cylinder plate (12) and end cap (22)
- Install spring side cylinder (20b)
- Place spring assembly in spring side cylinder (20b)
- Install end cap (22) over stay rods (21), vent hole on end cap (22) should be

opposite the vent hole of cylinder plate (12)

- Using four lock washers (23) and four stay rod nuts (24), evenly tighten end cap (22) over spring side cylinder (20b), ensure proper alignment of cylinder
- Torque stay rod nuts (24) to 27 ft lbs.

Piston side cylinder assembly

- Install piston o-ring (17) onto piston (15)
- Place gasket (19) on cylinder plate (12) and end cap (22)
- Slide piston side cylinder (20) over piston (15)
- Install end cap (22) using four cylinder bolts (37) and four lock washers (23), ensure vent hole on end cap (22) is opposite vent hole of cylinder plate (12)
- Torque cylinder bolts (37) to 27 ft lbs.
- Install cover (2) by first applying a silicone sealant around edge of cover, inside bolt pattern to ensure a weather proof seal, install four cover screws (10)

End Stop Installation and Adjustments

- Install end stop (25) into center hole of end caps (22), slide end stop o-ring (26) over end stop, place end stop washer (27) over end stop and install jam nut (28)
- Tighten or loosen end stop (25) to adjust travel for fully open or closed operation, tighten jam nut when set.

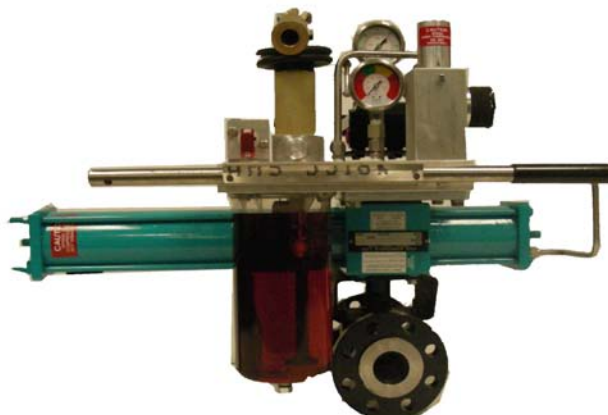
Torques

| Actuator Model | Min. Operating Pressure (PSIG) | Max. operating Pressure (PSIG) | Calculated Spring Unloading Torque (in.lb) Starting | Calculated Spring Unloading Torque (in.lb) Mid-Stroke | Calculated Spring Unloading Torque (in.lb) Ending | Calculated Hyd. Loading Torque at Min. Operating Pres. (in.lb) Starting | Calculated Hyd. Loading Torque at Min. Operating Pres. (in.lb) Mid-Stroke | Calculated Hyd. Loading Torque at Min. Operating Pres. (in.lb) Ending |
|--------------------------|--------------------------------|--------------------------------|--|--|--|--|--|--|
| Series 35D SRM100 | 200 | 275 | 2730 | 1060 | 1530 | 2710 | 1050 | 1500 |

Table 1: Torques

Testing and Trouble Shooting

- With pressure applied to the actuator check gaskets and end stops with soap and water or other leak detecting fluid. A leak may indicate that fasteners may need to be tightened or gaskets/o-rings may need to be replaced.
- Check for leakage from opposite side of the piston. A leak may indicate the necessity to replace the o-rings.
- If the actuator has not been operated for a long period of time, some leakage past piston seals may be observed upon start up. Cycling the actuator a few times may cause the o-rings to regain their resiliency and stop this leakage. Should leak continue, o-rings/gaskets may need to be replaced.



CVS Series 35D SRM 100 with CVS Self Contained Hydraulic Pump, CVS ALS 410 Limit Switch, and CVS Ball Valve.

CVS Series 35D SRM100 Actuator Assembly

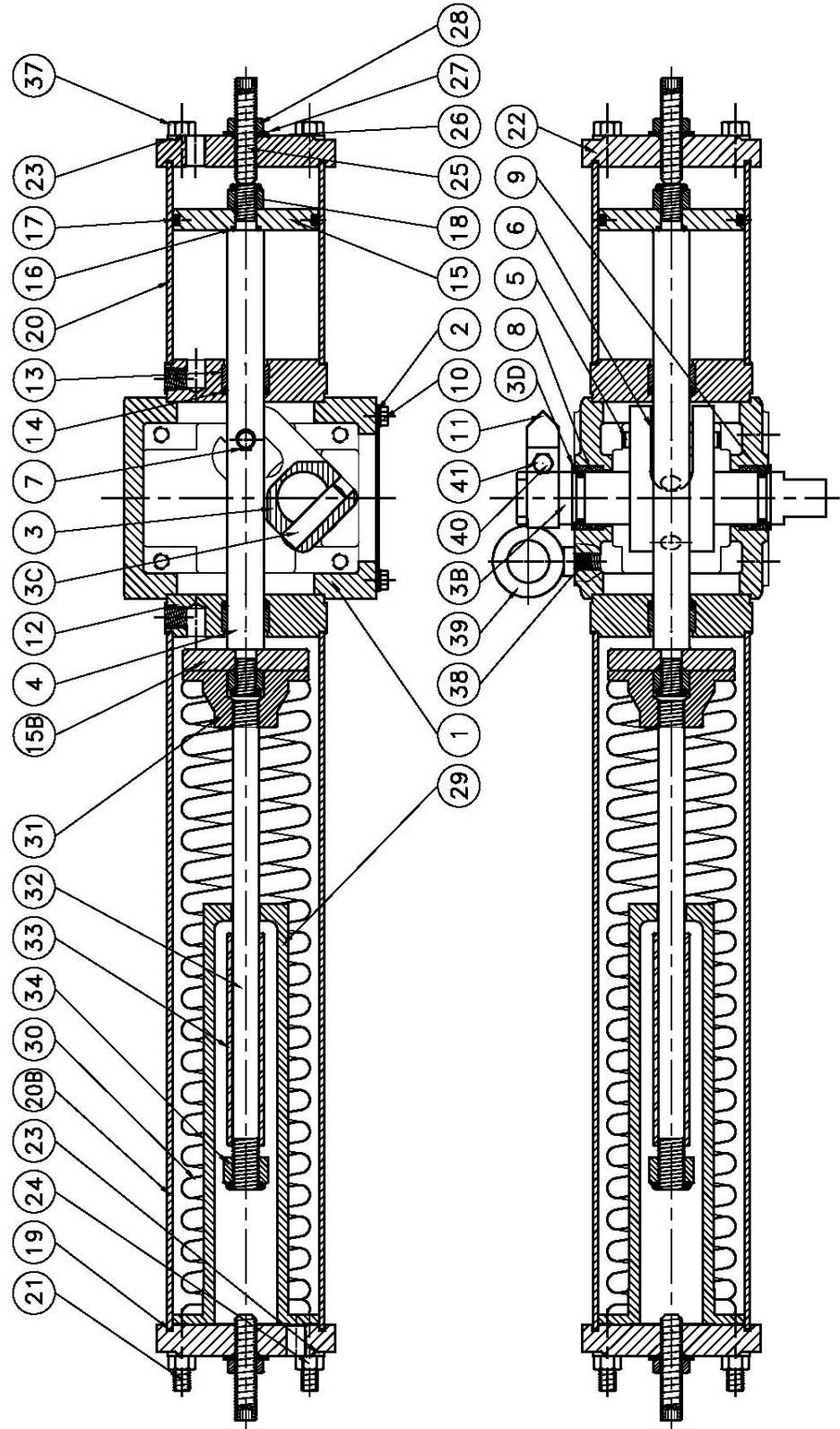


Figure 2: CVS 35D SRM100 Assembly

CVS Series 35D SRM100 Parts Listing

| Item | Qty | Material Description, Part Number |
|------|-----|-----------------------------------|
| 1 | 1 | Drive Case, CVS 35D0001 |
| 2 | 1 | Cover, CVS 35D0002 |
| 3 | 1 | Yoke, CVS 35D0003 |
| 3B | 1 | Stem, CVS 35D0003B |
| 3C | 1 | Yoke Pin, CVS 35D0003C |
| 3D | 2 | Snap Ring, CVS 35D0003D |
| 4 | 1 | Drive Rod, CVS 35D0004 |
| 5 | 1 | Drive Pin, CVS 35D0005 |
| 6 | 2 | Drive Roller, CVS 35D0006 |
| 7 | 2 | Snap Ring, CVS 35D0007 |
| 8 | 2 | Bushing, CVS 35D0008 |
| *9 | 2 | O-Ring, CVS 35D0009 |
| 10 | 4 | Cover Screw, CVS 35D0010 |
| 11 | 1 | Indicator, CVS 35D0011 |
| 12 | 2 | Cylinder Plate, CVS 35D0012 |
| 13 | 2 | Drive Rod Guide, CVS 35D0013 |
| *14 | 2 | Drive Rod Seal, CVS 35D0014 |
| 15 | 1 | Piston, CVS 35D0015 |
| 15B | 1 | Piston, CVS 35D0015B |
| *16 | 2 | Piston Center O-ring, CVS 35D0016 |
| *17 | 1 | Piston O-ring, CVS 35D0017 |
| 18 | 2 | Piston Lock Nut, CVS 35D0018 |
| *19 | 4 | Cylinder Gasket, CVS 35D0019 |
| 20 | 1 | Cylinder, CVS 35D0020 |
| 20B | 1 | Cylinder, CVS 35D0020B |
| 21 | 4 | Stay Rod, CVS 35D0021 |
| 22 | 2 | End Cap, CVS 35D0022 |
| 23 | 8 | Lock Washer, CVS 35D0023 |
| 24 | 4 | Stay Rod Nut, CVS 35D0024 |
| 25 | 2 | End Stop, CVS 35D0025 |
| *26 | 2 | End Stop O-ring, CVS 35D0026 |
| 27 | 2 | End Stop Washer, CVS 35D0027 |
| 28 | 2 | Jam Nut, CVS 35D0028 |
| 29 | 1 | Barrel, CVS 35D0029 |
| 30 | 1 | Spring, CVS 35D0030 |
| 31 | 1 | Retainer, CVS 35D0031 |
| 32 | 1 | Rod, CVS 35D0032 |
| 33 | 1 | Spacer, CVS 35D0033 |
| 34 | 1 | Lock Nut, CVS 35D0034 |
| 37 | 4 | Cylinder Bolt, CVS 35D0037 |
| 38 | 3 | Set Screw, CVS 35D0038 |
| 39 | 1 | Eye Bolt 3/8", CVS 35D00030 |
| 40 | 1 | Indicator Screw 1/4, CVS 35D0040 |
| 41 | 1 | Indicator Nut 1/4, CVS 35D0041 |

***Recommended Spare Parts**

Table 2: 35D SRM100 Parts Listing

Torque Specifications – CVS Series 35D

| Item Description | Item Number | Torque ft-lb |
|---------------------------------------|--------------|--------------|
| Cover Screws | 10 | 10 |
| Stay Rod-Nuts/Bolts | 21, 24 | 20-30 |
| Piston Nut | 18 | 80 |
| Cylinder Bolts | 37 | 20-30 |
| Mounting Bolts- 3/8NC X 1-1/4 inch | Not Supplied | 20-30 |

Table 3: Torque Specifications

Drive Case and Mounting Dimensions, Top View (inches)

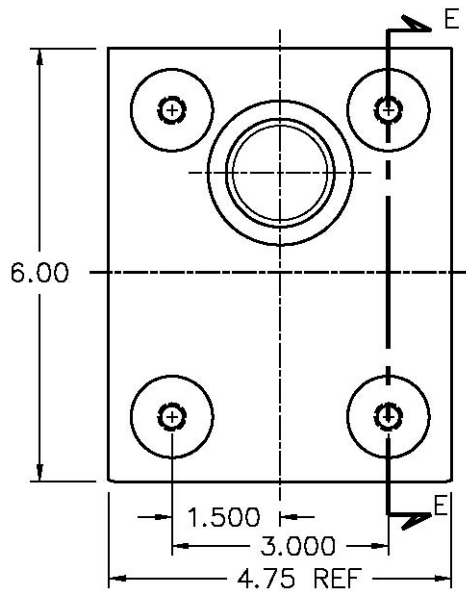


Figure 3: Drive Case

CVS Series 35D SRM100 Dimensions (inches)

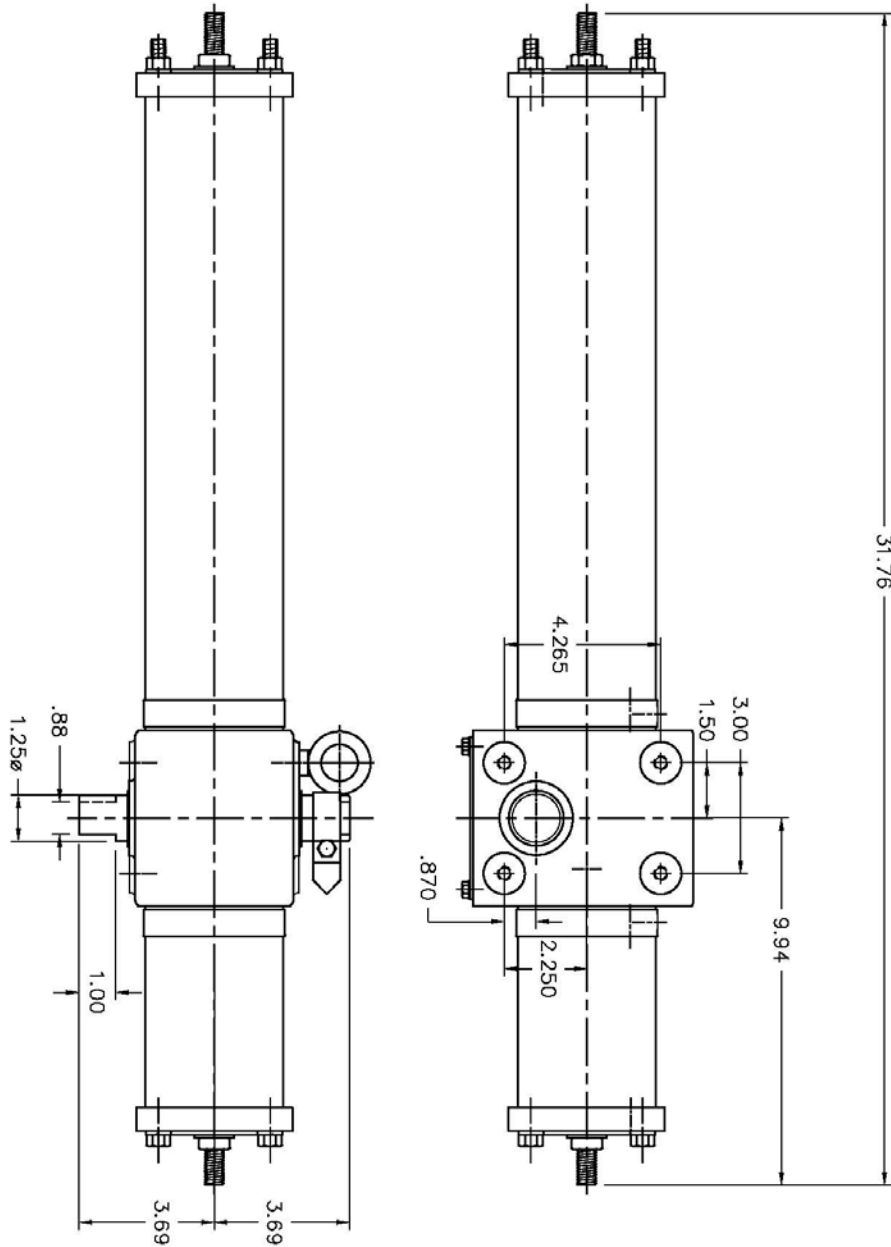


Figure 4: CVS Series 35D SRM100

CVS Controls Ltd. strives for the highest levels of quality and accuracy. The information included in this publication is presented for informational purposes only. CVS Controls Ltd. reserves the right to modify or change, and improve design, process, and specifications without written notice. Under no circumstance is the information contained to be interpreted to be a guarantee/warranty with regard to our products or services, applicability or use.

Selection, use and maintenance are the sole responsibility of the end user and purchaser. CVS Controls assumes no liability for the selection use and maintenance of any product.

Notes:

Notes:

CVS

Controls Ltd.

Head Office

3900 101 Street
Edmonton, Alberta
T6E 0A5
Canada
Office: (780) 437-3055
Fax: (780) 436 5461

Calgary Sales Office

205, 2323 – 32 Avenue
NE Calgary, Alberta
T2E 6Z3
Canada
Office: (403) 250-1416
Fax: (403) 291-9487

Website: www.cvs-controls.com

Email: info@cvs-controls.com